

8.4" Chassis TFT LCD Monitor

Industrial Application



Where Versatility Meets Flexibility

K08AS-CA
Configuration
K08AS-CA

LCD Display 8.4" TFT active matrix panel

Pixel Pitch 0.213(H) x 0.213 (V) mm

Max. Resolution SVGA 800 x 600

Contrast Ratio 350:1 (typical)

Brightness 220 Cd/m² (typical)

Response Time (Tr+ Tf) 35 ms (typical)

Display Color 262K

Effective Display Area 170.4(V) x 127.8(H)

Viewing Angle (CR ≥ 10) 120 (H) x 100 (V)

Backlight CCFL x 1

Lamp Life 20,000(hr)

Input Signals Analogue VGA

Signal Connector Analog D-sub 15 pin (VGA)

Digital

N/A

Video-in

N/A

Scan Frequency H. scan 31~38KHz,

V. scan 56 ~ 75Hz

Speakers N/A

USB HUB N/A

Touch panel Resistive - RS232 or USB A type (option)

Key Control Power on/off with LED, Menu, Select, Adjustment (+, -)

Operating Condition Temperature 0°C-50°C (32°F-122°F)

Humidity 20%-80% (no condensation)

Altitude To 10,000 feet

Storage Condition Temperature -20°C-60°C (-4°F-140°F)

Humidity 10%-90% (no condensation)

Power Universal power adaptor Input AC 100~240V, 50~60Hz; Output DC 12V / 3A

Power Consumption 36W

Power Management VESA DPMS Standard

Dimensions (WxHxD) 220.0 x 165.0 x 41.9 mm

Dimensions (Carton 2 in 1) 430 x 310 x 118 mm

Weight (Net) 1.8 Kg

Certification C-UL, CE

Features :

- * Rugged metal chassis offering strong protection
- * High contrast color TFT LCD open frame display support resolution up to SVGA 800 x 600 Compatible with IBM, VGA, VESA standards.
- * Flexible mechanical designs for industrial application.
- * Support DDC1/2B for Plug & Play compatibility.
- * Advanced OSD control for picture quality adjustment.
- * Industrial OSD foil.
- * Optional removable OSD pad.
- * Optional touch solutions.
- * Optional Industrial Power Plug.
- * Hot key for AUTO adjustment.
- * Flexible Mounting Solutions - Front mounting, Rack mounting & VESA mounting.
- * Space reserved under I/O port.
- * Input power range 12V ~ 24V supported.
- * IP54 water resistant compliant (Option)

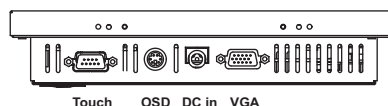
Optional Accessories :

- ELO 5-wire resistive touch panel.
- Multiple touch panels available
- Anti-Glare tempered glass
- Customized touch solution acceptable.
- Front Mounting Frame.
- 19" Rack Mounting Frame.
- Removable OSD Pad
- Built-in Industrial Power Plug

Ordering Information :

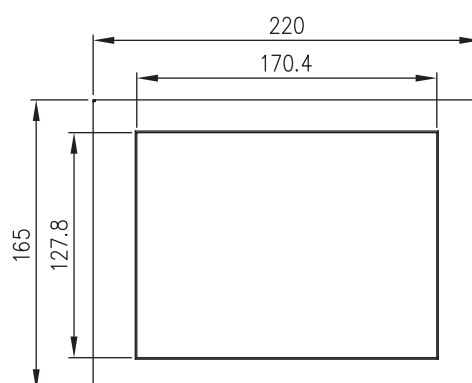
- K08AS-CA VGA only

* Specifications are subject to change without notice.

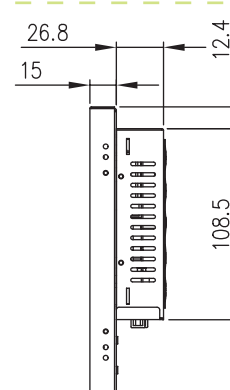
Mechanical drawing
I/O Ports


Touch OSD DC in VGA

UNOT : mm



Front Side



Back Side

Legacy Technology Services

We Rent & Sell All Types Of Barcode Equipment

Call now to talk to an expert

866-271-9891

www.LegacyGlobal.com

Some brands we carry



MOTOROLA

Intermec

DATALOGIC™

Honeywell

EQUINOX
PAYMENTS



About us

- Legacy Technology Services is a leading nationwide provider of mobile computing, barcode, printers and point of sale equipment and services.
- For over a decade, thousands of clients across North America have trusted us to provide equipment from leading manufacturers backed by the services to support them.

Latest Hardware from top manufacturers

- Legacy handles virtually every major manufacturer of mobile computing, barcoding and point of sale equipment.

Expert Repair and Maintenance services

- Legacy is one of the best repair facilities in North America

Discontinued product sourcing

- They don't make it anymore? Our inventory also includes manufacturer close-outs and discontinued equipment to support our clients legacy infrastructure.

Trade-in and Disposal services

- That old equipment laying around your facility may still have some value. Legacy routinely purchases equipment from our clients around the globe.
 - Data destruction
 - Hardware disposal
 - Auditing services

Dedicated client account team

- Dedicated, highly trained account managers are here to answer all your questions and provide top notch service.

Equipment rental services

- Sometimes renting is a better solution, Legacy's huge rental inventory provides the equipment you need for temporary needs and projects.



Legacy, Inc.

160 West Road,
Ellington, CT 06029

Toll Free: 866-271-9891

Fax: 888-522-4684